

100% WATERPROOF
Mitigates Corrosion
Under Insulation (CUI)

**OIL & CHEMICAL
RESISTANT**
Engineered for Demanding
Operating Environments

**TOP R-VALUES
ON THE MARKET**
Wide Temperature
Operating Range

**UNMATCHED
THERMAL STABILITY**
Energy, Process
& Cost Efficiency

**FAST & EASY
INSTALLATION**
Installs 10x Faster with
Standard Tools

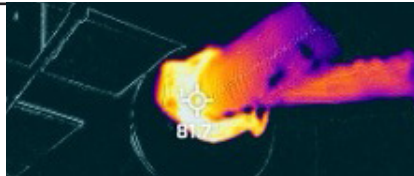
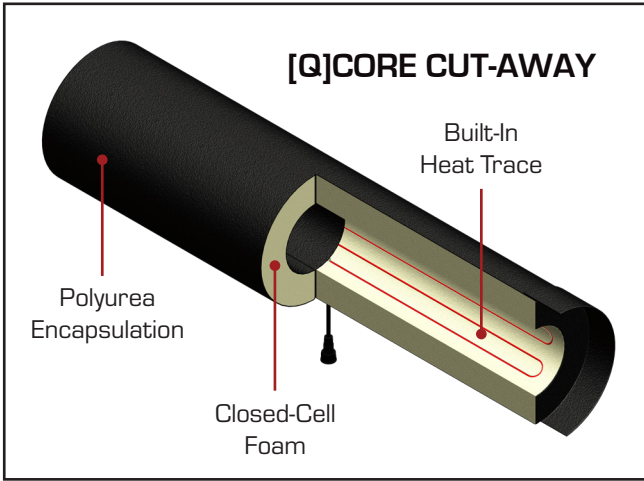
**REMOVABLE
& REUSABLE**
Install, Remove, Inspect,
Reinstall, Repeat

20+ YEAR LIFESPAN
100% Encapsulated,
Impact Resistant,
& Impenetrable

[Q]CORE INSULATION

ENGINEERED WITH BUILT-IN HEAT TRACE

[Q]CORE Insulation combines Dragon Jacket's superior R-value with integrated heat trace, delivering a low-voltage, single-piece solution designed to maintain critical temperatures, prevent heat loss, and ensure efficiency in high-temperature differential applications—where precision and performance matter most.



TECHNICAL DETAILS

- Designed for 120V electrical systems
- R-value 6.25 per-inch
- Temperature ranges from 0° F to 350° F

EASY TO INSTALL. EASY TO MAINTAIN. EASY TO MANAGE.

NO LICENSED ELECTRICIAN REQUIRED

Traditional heat trace systems require expensive specialized training and a time-consuming and labor-intensive installation process. Dragon Jacket's [Q]CORE, with built-in heat trace is a one-and-done solution that can be installed by existing personnel in a fraction of the time.

WORRY-FREE DURABILITY

Unlike traditional heat trace, which often relies on less efficient, fast-degrading insulation, [Q]Core's built-in heat trace is protected by the tried and true durability of Dragon Jacket's polyurea-encapsulated, closed-cell foam construction, engineered to deliver decades of reliable heat retention.

REMOVES AND REINSTALLS FAST & EASY

Traditional heat trace makes maintaining components like valves and strainers difficult and laborious. With Dragon Jacket [Q]CORE, removal and reinstallation are fast and easy, resulting in zero damage to the insulation or integrated heat trace when performed correctly.



FDA Approved for Incidental Food Contact
Made in the USA with a 5-Year Limited Warranty



DRAGON JACKET
INSULATION

208-772-8640
info@dragonjacket.com
www.dragonjacket.com

DRAGON JACKET [Q]CORE INSULATION TECHNICAL DATA

CLOSED CELL FOAM | 100% POLYUREA ENCAPSULATION | IMPACT RESISTANT | 20+ YEAR LIFESPAN

Dragon Jacket Insulation's patented technology provides superior thermal protection and prevents corrosion under insulation (CUI). Built to withstand harsh environments, its impenetrable design delivers 20+ years of reliable performance in the field.

MATERIAL PROPERTIES – DRAGON JACKET STANDARD AND HIGH-TEMPERATURE INSULATION

PARAMETER	TEST METHOD(S)	STANDARD	HIGH-TEMP	UOM
Minimum Operating Temperature		-60	-40	F
Maximum Operating Temperature		275	350	F
R-Value (per inch)	ASTM C518/ASTM C177/EN 12667	6.25	6.25	Btu/hr-ft ² -F
Thermal Conductivity	ASTM C518/ASTM C177/EN 12667	0.16	0.16	Btu-in/hr-ft ² -F
Density	ASTM 1622/EN 1602/EN ISO 845	2	2	lb/ft ³
Compressive Strength	ASTM 1621/EN 826	22	22	psi
Tensile Strength	ASTM D638	>4,000	>5,200	psi
Water Absorption by Volume	ASTM C272	<0.6	<0.6	%
Surface Burning Characteristic	ASTM E84	<25	<25	FSI
Surface Burning Characteristic	ASTM E84	<450	<450	Smoke Development
Weatherability QUV	3000+ hour test	0 degradation	0 degradation	
Abrasion Resistance	ASTM D4060 (1 kg, 1,000 cycles)	62	62	mg lost

CHEMICAL RESISTIVITY – DRAGON JACKET STANDARD AND HIGH-TEMPERATURE INSULATION

PARAMETER	STANDARD	HIGH-TEMP
Acetic Acid 10%	Intermittent Contact	Intermittent Contact
Acetic Acid 40%	Not Recommended	Not Recommended
Acetic Acid 50%	Not Recommended	Not Recommended
Hydrochloric Acid 24%	Immersion, Splash, Spillage	Immersion, Splash, Spillage
Phosphoric Acid 50%	Immersion, Splash, Spillage	Immersion, Splash, Spillage
Sulfuric Acid 50%	Not Recommended	Not Recommended
Crude Oil	Intermittent Contact	Intermittent Contact
Diesel	Immersion, Splash, Spillage	Immersion, Splash, Spillage
Ethanol	Not Recommended	Not Recommended
Gasoline	Intermittent Contact	Intermittent Contact
Jet Fuel	Intermittent Contact	Intermittent Contact
Toluene 60%	Immersion, Splash, Spillage	Immersion, Splash, Spillage
Methanol	Not Recommended	Not Recommended
Skydrol	Not Recommended	Not Recommended
Xylene	Intermittent Contact	Intermittent Contact
Mineral Oil	Immersion, Splash, Spillage	Immersion, Splash, Spillage
Sodium Hydroxide 50%	Immersion, Splash, Spillage	Immersion, Splash, Spillage
Water	Immersion, Splash, Spillage	Immersion, Splash, Spillage



DRAGON JACKET
INSULATION

FDA Approved for Incidental Food Contact
Made in the USA with a 5-Year Limited Warranty

208-772-8640
info@dragonjacket.com
www.dragonjacket.com