

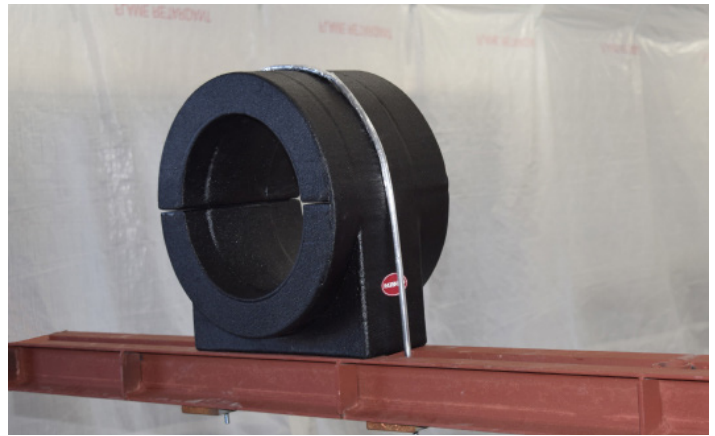
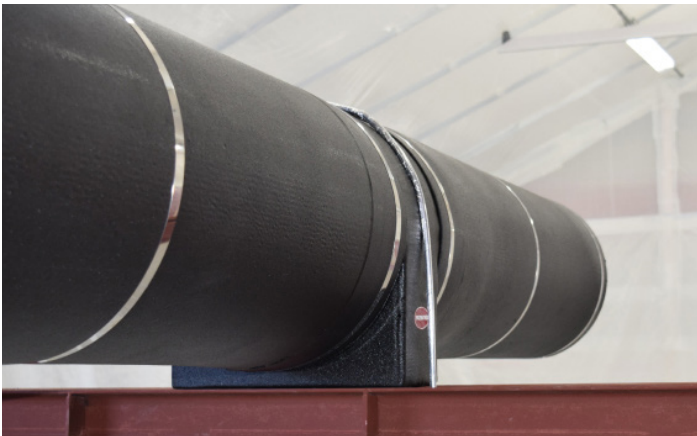


DRAGON JACKET

INSULATED PIPE SADDLE



Insulates pipe from horizontal and vertical mounting brackets and creates connection points for insulation.



Operating Temperature Range from
-109°F (-78.3°C) to 350°F (176.6°C)

R-Value: 12.53 | **K-Value:** 0.174

Installation: Open and Close | U-Bolt Attachment

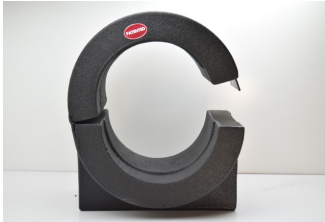
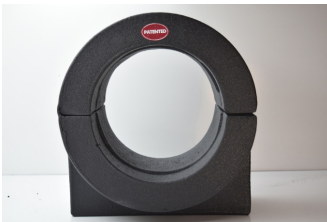
Materials: 2lb. High Density Foam Core Fully Encapsulated by Polyurea

Minimum Compressive Strength: 900 PSI

Standard Sizes: 2"-12"

Standard Colors: High Pigment Black and Silver

(Custom Sizes and Colors Quoted Upon Request)



Made in the
USA



Proud Member of

NIA National Insulation
Association™

IGNITE
NORTHWEST

WWW.DRAGONJACKET.COM