

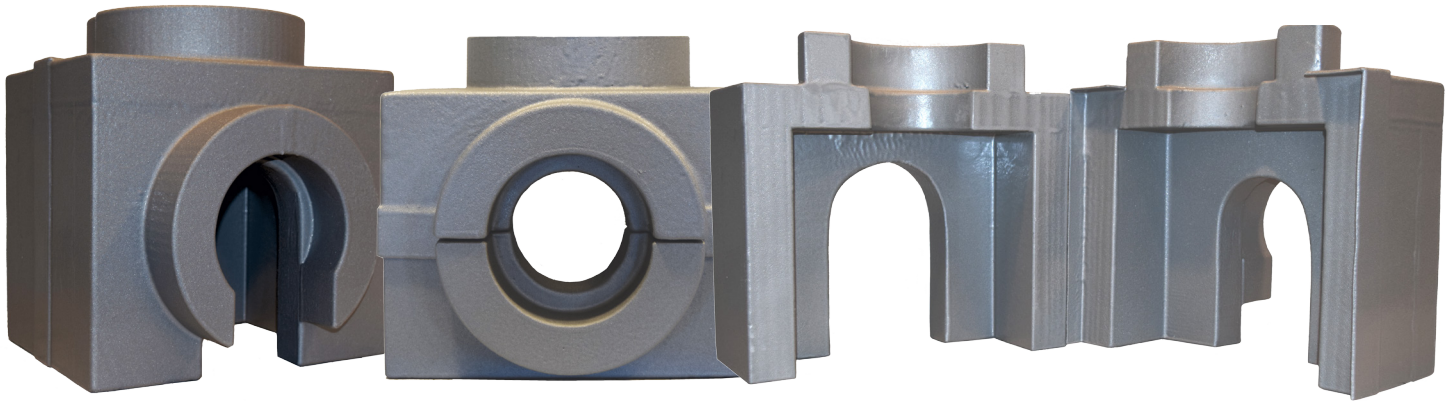


# DRAGON JACKET

---

## INSULATED PUMP COVER

A solution to the industry's need for an insulation product that covers pumps while also facilitating a direct attachment from pipe insulation to the pumps in the field.



**Operating Temperature Range:** -109°F (-78.3°C) to 350°F (176.6°C)

**R-Value:** 6.25/inch or 12.53/2 inches

**K-Factor:** 0.174 Btu-in./hr-ft<sup>2</sup>-F  
(metric equivalent: 0.025 W/m-K)

**Installation:** Open and Close

**Material:** 2lb Density Closed Cell Foam Fully Encapsulated by 100% Polyurea

**Certifications:** ASTM E84 | **Rated in Class A**

**Standard Sizes:** 2"-12"

**Standard Colors:** High Pigment Black and Silver  
(*Custom Sizes and Colors Quoted Upon Request*)

Made in the  
USA



**PATENTED**

Proud Member of

**NIA** | National Insulation  
Association™

[WWW.DRAGONJACKET.COM](http://WWW.DRAGONJACKET.COM)